



ART
HISTORY
PARKS
PATHWAYS &
TECHNOLOGY

MIDDLETON CONNECTS

"Middleton Connects" is a vision to enhance walkability and livability in Middleton.

Vision Statement. Create places and experiences that will educate, entertain and connect the community of Middleton with art and history utilizing parks, playgrounds, schools, pathways and technology.

Goals:

1. *Enrich Middleton's sense of community with a pathway system that connects neighborhoods to schools, parks and downtown.*
2. *Honor Middleton's history by engaging the community through historical interpretive signs in parks and along pathways.*
3. *Capture, preserve and present Middleton's history in pictures, stories and artifacts at the Art and History Museum, which will be a legacy for generations to come.*
4. *Encourage public art that creates social, cultural or historical statements consistent with Middleton Connects' vision.*

Middleton Connects is anchored by two significant accomplishments in 2012:

First, the City applied for and received a \$47,000 historic preservation grant from Canyon County to convert the Civic Center, originally built in the early 1900's by Idaho Power as an electric substation, into an Art and History Museum. The Art and History Museum will create a cultural icon for students, young and old, to embrace the rich history that makes Middleton unique. This location is convenient for residents and visitors, and is also close to schools which allow walking tours and field trips.

Second, the City engaged Jensen Belts Associates, a Meridian based landscape architecture firm, and Josh Neill, a master's-degree student at University of Idaho, to create a master plan to upgrade Middleton-Place Park (Harmon Park). The master plan presented to City Council on January 16, 2013 was delivered at no cost to the City and valued at \$20,000.

Middleton-Place Park Purpose, Goals and Design

The Middleton-Place Park upgrade is focused on creating a leisure park. It was identified through community input that many residents were currently leaving the City for family reunions and leisure park type activities. Middleton Connects vision is to provide family-friendly places and experiences in Middleton. Parks managed by the Greater Middleton Parks and Recreation District are primarily for sports programs such as baseball, soccer, football, etc.

Middleton-Place Park Goals: Create gateways to define park entrances; connect different areas of the park by an

internal pathway network; link to a City-wide pathway system; diversify park features for year-round usability; integrate historic elements and establish historic connections; and enhance and supplement (upgrade and expand) current site amenities and safety.

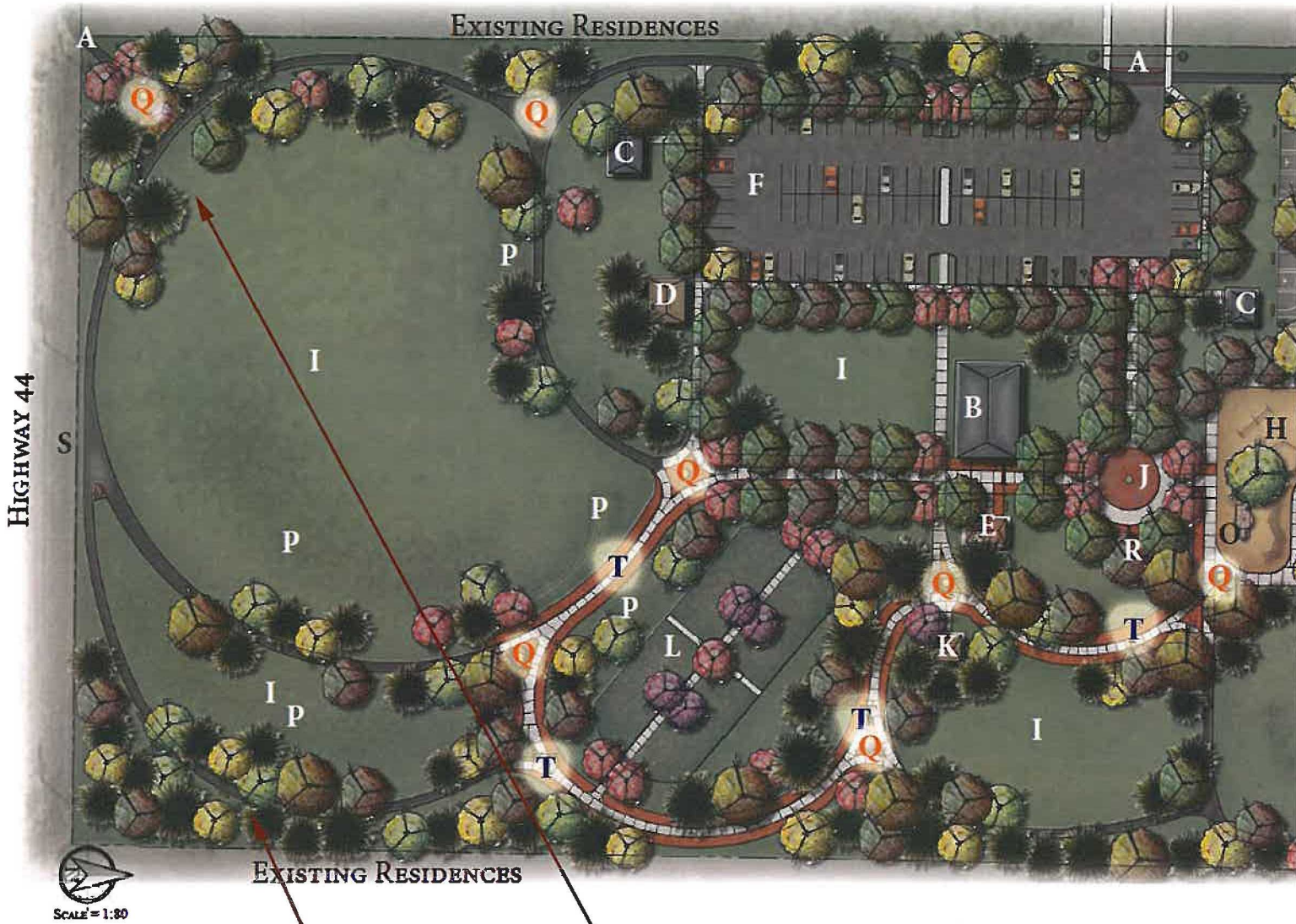
The Park's master plan provides two types of paths: 1) a series of paths for casual walking and/or running, they are anticipated to be asphalt and six feet (6') wide; and 2) the central path, called The Loop, is a lighter surface pattern using color, pavers and ribbon curbing, it is symbolic of "The Loop" that provided a valley-wide recreational activity in the early 1900s (see page 3 for more information). The City is attempting to obtain and re-assemble the historic William Montgomery cabin along The Loop in Middleton-Place Park, as another historic aspect of the design and focal element in the park.

The Park's master plan includes drinking fountains, new restrooms, an expanded playground, and additional BBQ shelters. It also introduces a contemplation garden, splash pad, benches along the paths, and an area for a public art feature.

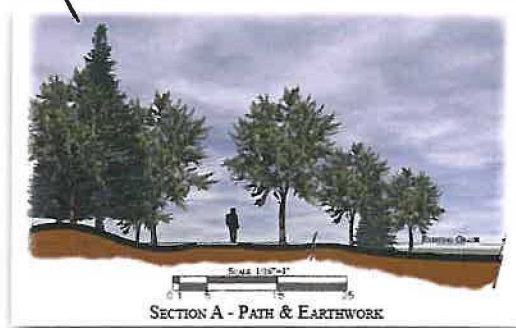
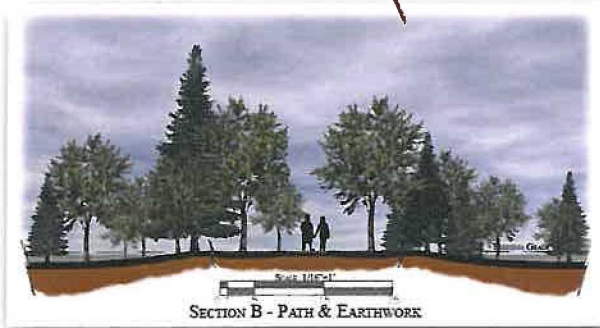
Currently, the Park has little topographic variation – it's very flat. The new design adds berms and depressions and introduces a hill, 25-foot high at its pinnacle. The hill provides the Park more character while creating a variety of interesting views and fun potential activities – like sledding in the winter, and running and tumbling in the summer!

Finally the design adds many trees as a buffer along the park perimeter to give a sense of closure and keeping focus inward.

Middleton-Place Park (Harmon Park) Masterplan



-- Changing the park topography by adding berms and a sledding or tumbling hill for year-round use



Berms and depressions provide more character and create a variety of variation as you move through the park. The pictures above show how berms and depressions would look along walking paths.

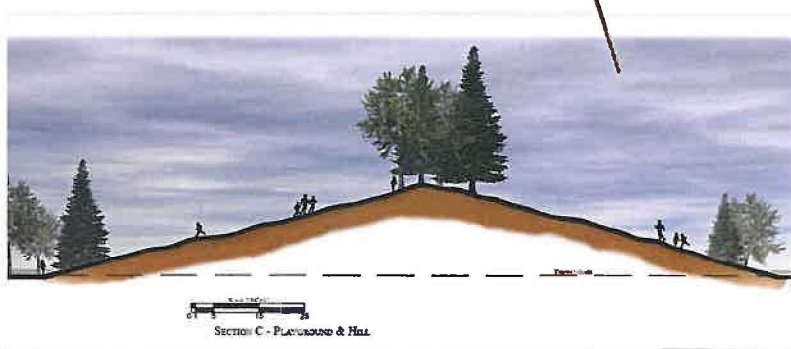
Introducing a hill tumbling and run sloped to safely

Masterplan Key Map

- A - Gateways & Path Connections
- B - Existing Shelters
- C - Proposed Shelters
- D - Existing Utilities & Structures
- E - Proposed Restrooms
- F - Renovated Existing Parking
- G - Proposed Parking
- H - Expanded Playground
- I - Multi-purpose Areas
- J - Splash Pad
- K - William Montgomery Cabin
- L - Contemplation Rose Garden
- M - Hill (25 ft. total height)
- N - Renovated Basketball Courts
- O - Retained Slide
- P - Berms and Depressions
- Q - Historical and Educational Elements
- R - Public Art Sculpture
- S - Park View from Highway 44
- T - The "Loop" Pathway



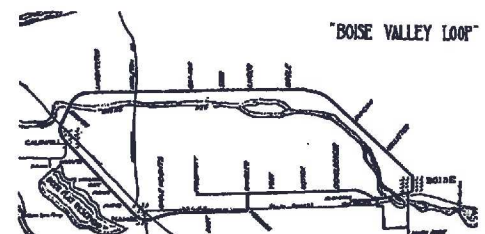
depressions,
enjoyment --



allows for year-round fun by providing sledding in the winter, and
play in the summer. The hill, with a 25 foot pinnacle, will be gently
sloped for low play and routine maintenance.

THE LOOP?

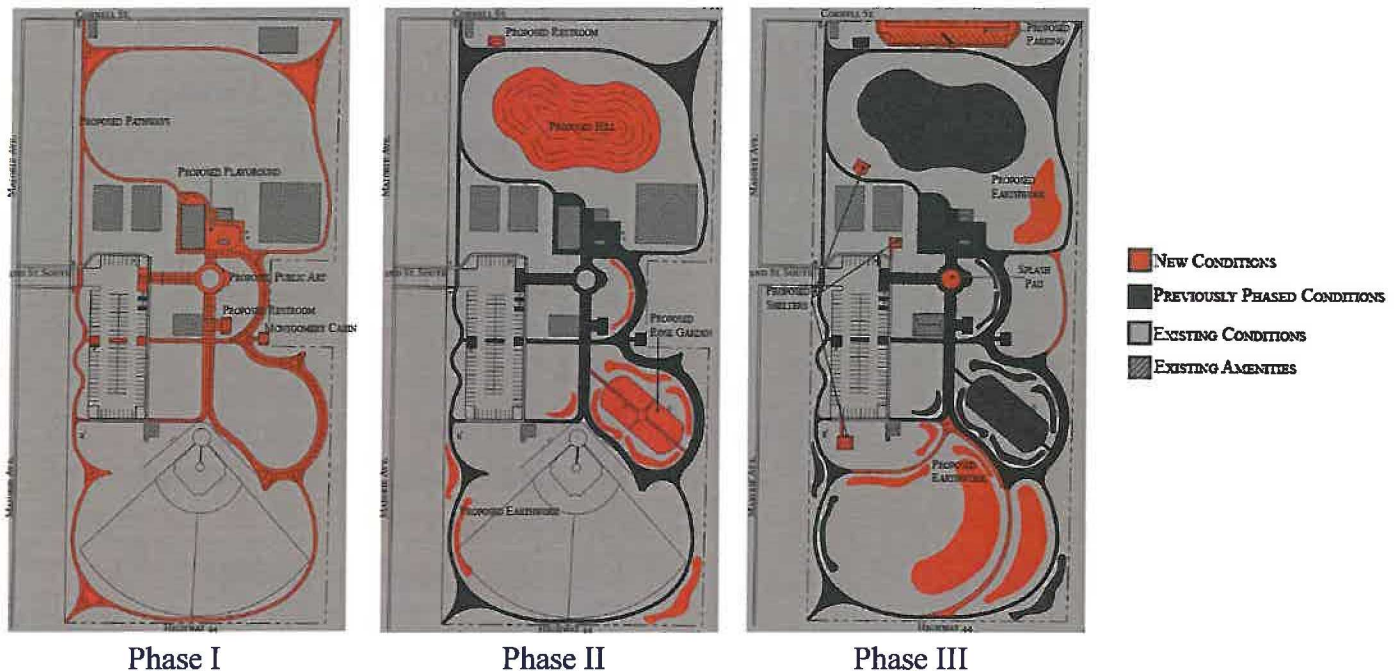
In the early 1900s, Middleton residents would enjoy "looping the loop" on Sunday afternoon for leisure. Electric street cars carried residents who could stop at Lake Lowell, or continue into Boise to visit the Natatorium. The Middleton-Place Park "loop" is symbolic of the Boise Valley Loop. Historic and educational signs along the loop in the park will describe the Boise Valley Loop and showcase Middleton's history.



Construction Phasing

Middleton-Place Park construction will happen over several years depending on funding, grants, etc. A phase does not represent a year, it groups similar construction activities together to save costs. The phased approach allows time and flexibility to add, keep or remove park elements. Community input is invited throughout the entire project, please direct comments to Becky Crofts at 585-3133.

The phasing plan shows the baseball diamond, tennis courts and volleyball pits being phased out over time because initial community feedback ranked them low in desirability ... possibly indicating those amenities were available at schools or in other parks. However, these amenities will probably remain in the park for several years. The skate park will remain intact until a larger skate park location can be identified and funded.



Park Upgrades Planned for 2013

In 2013 the City has budgeted for the following upgrades:

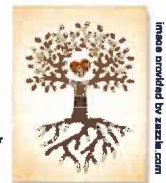
- Expand playground and upgrade equipment
- Add park signage
- Design and/or install infrastructure for electrical, plumbing
- Design new restrooms

Middleton Connects vision and goals, along with the Middleton-Place Park master plan, help the City to compete and score higher on grant proposals. The City is actively pursuing local and federal grant funding for sidewalks, pathways, solar lighting, Wi-Fi connectivity, historical interpretative signs, an interpretive center, and park expansion. The City is working with several agencies to identify grants including Canyon County Parks and Recreation and Idaho Parks and Recreation. Senator Risch's office has committed to supporting Middleton's federal grant opportunities.

Middleton Connects Pathway System

The Middleton Connects pathway system uses existing sidewalks and streets to connect neighborhoods to schools, parks, and downtown. A 3-mile and 5-mile loop have been conceptually designed. The 3-mile loop connects Middleton-Place Park, Foote Park, Mill Creek Elementary, through Roadside Park (Tank Park) and along Ridleys down to the Boise River. The 5-mile loop connects Middleton-Place Park, Mill Creek Elementary, Heights Elementary, the Middleton Middle School, downtown and Roadside Park (Tank Park).

Plant Your Roots
in Middleton



"Plant Your Roots in Middleton" is the City's fundraising program designed to help fund trees, park benches, shelters, and pathways in Middleton Place Park and in other Middleton Connects projects.

Individuals, clubs, organizations, schools and businesses can participate in Middleton Connects through donations, projects, community involvement, etc.